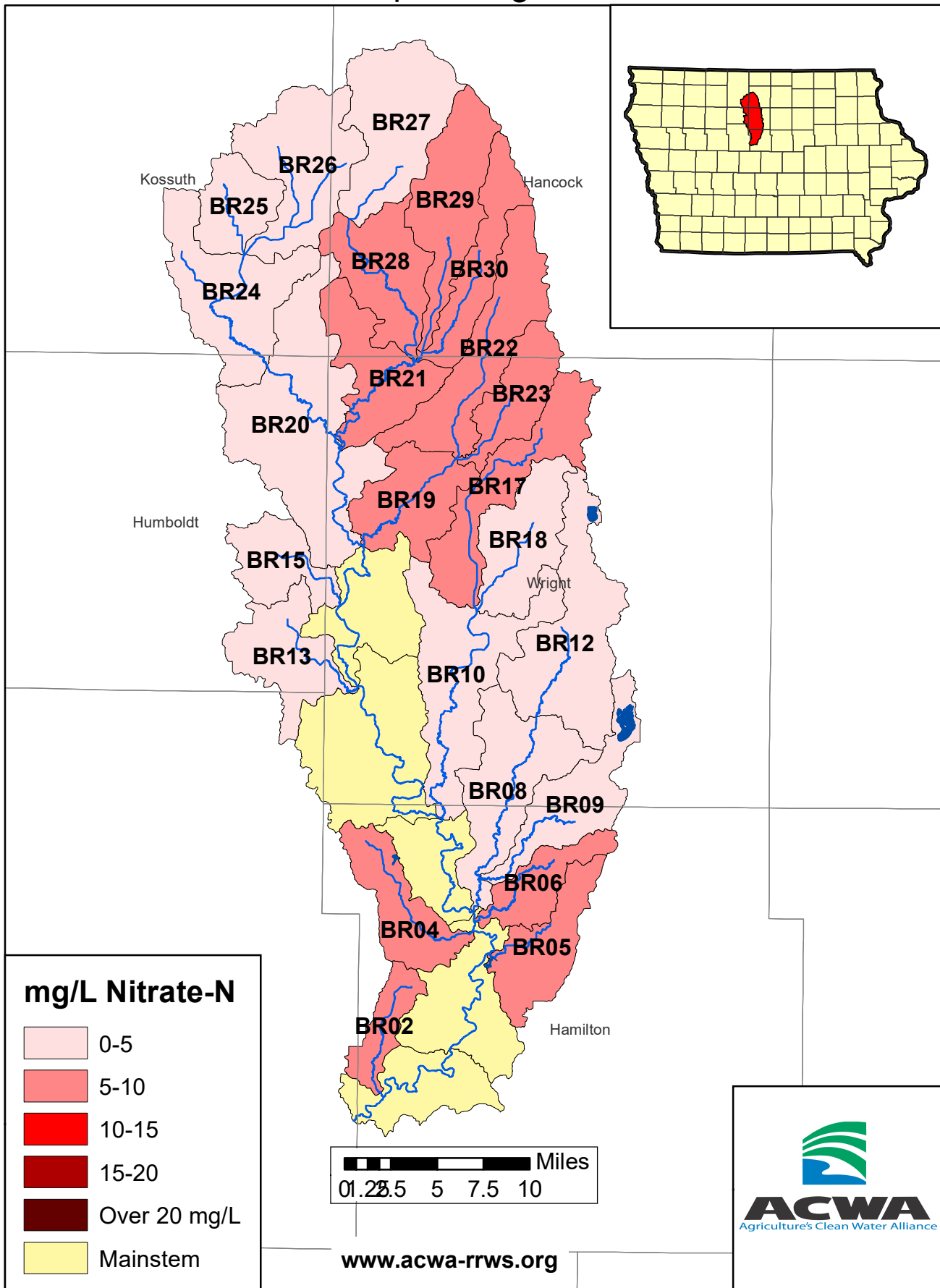


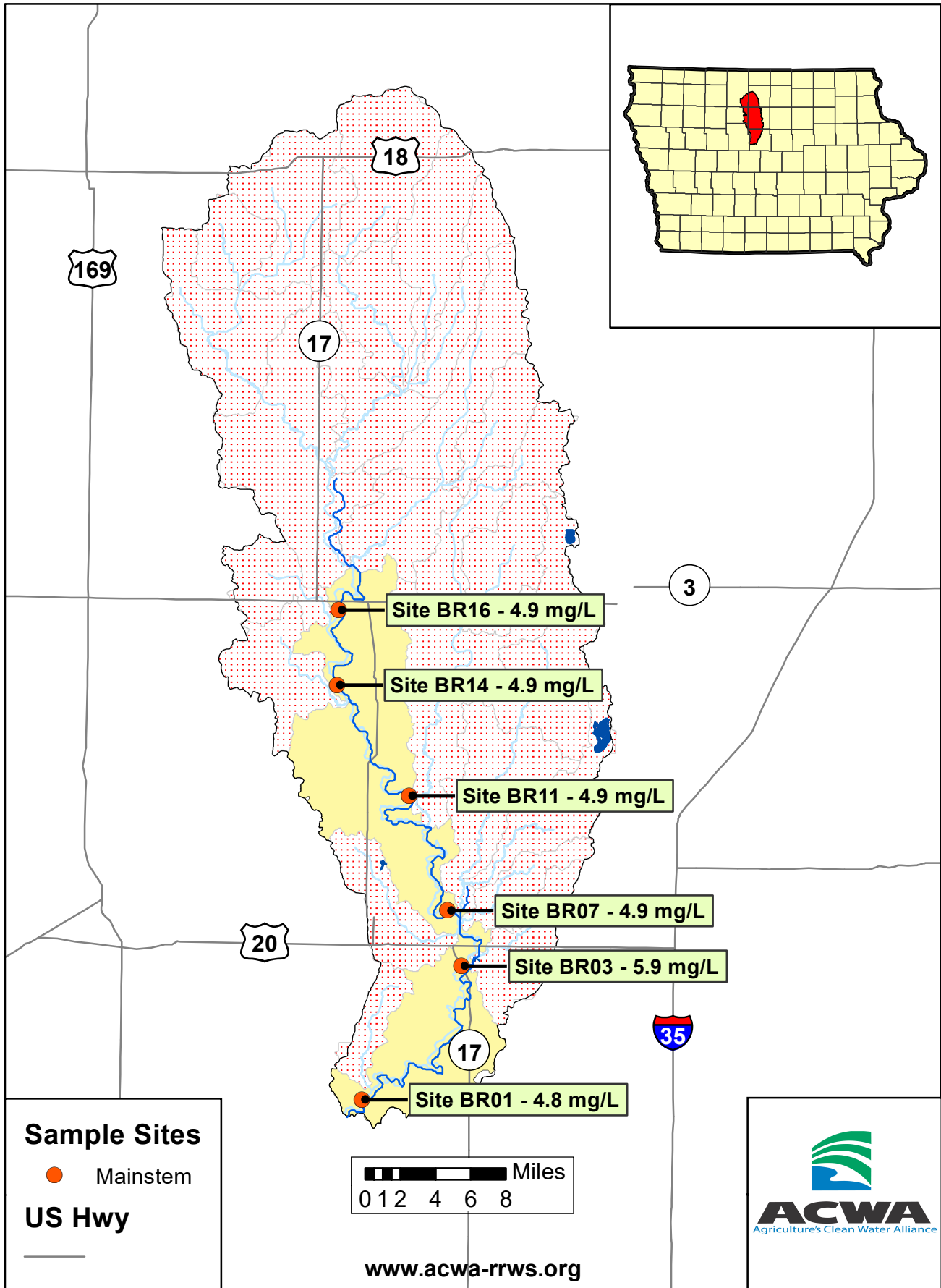
2021 Ave. Nitrate Concentrations-Boone River Tributaries

April - August



2021 Ave. Nitrate Concentrations-Boone River

April - August



2021 Average Nitrate-N Concentrations

| Site_Id | Stream_Name | April | May | June | July | August | Annual |
|---------|---------------------------|-------|------|------|------|--------|--------|
| BR01 | Boone River | 2.7 | 6.7 | 5.9 | 8.3 | 0.2 | 4.8 |
| BR02 | Prairie Creek | 3.7 | 12.7 | 7.8 | 1.2 | 0.2 | 5.1 |
| BR03 + | Boone River | 3.9 | 7.9 | 7.4 | 9.9 | 0.7 | 5.9 |
| BR04 | Brewers Creek | 5.4 | 11.8 | 13.7 | 0.6 | 0.6 | 6.4 |
| BR05 | Ditch Numbers 166 and 206 | 5.4 | 10.7 | 13.0 | 2.2 | 0.0 | 6.3 |
| BR06 | Lyons Creek | 5.5 | 9.1 | 10.8 | 2.3 | 0.0 | 5.5 |
| BR07 | Boone River | 4.0 | 7.0 | 6.2 | 7.3 | 0.2 | 4.9 |
| BR08 | White Fox Creek | 2.7 | 6.2 | 5.8 | 3.7 | 0.2 | 3.7 |
| BR09 | Buck Creek | 5.1 | 8.3 | 9.0 | 1.8 | 0.3 | 4.9 |
| BR10 | Eagle Creek | 2.8 | 6.2 | 6.5 | 2.5 | 0.2 | 3.7 |
| BR11 | Boone River | 3.5 | 6.7 | 6.1 | 8.0 | 0.2 | 4.9 |
| BR12 | White Fox Creek | 2.7 | 6.2 | 6.7 | 2.8 | 0.0 | 3.7 |
| BR13 | Drainage Ditch 3 | 2.7 | 5.5 | 2.6 | 1.3 | 0.2 | 2.4 |
| BR14 | Boone River | 4.2 | 7.8 | 5.4 | 7.1 | 0.2 | 4.9 |
| BR15 | Drainage Ditch 9 | 2.6 | 5.7 | 2.6 | 1.8 | 0.2 | 2.6 |
| BR16 + | Boone River | 2.8 | 7.0 | 6.1 | 8.5 | 0.3 | 4.9 |
| BR17 | Eagle Creek | 5.7 | 9.2 | 7.3 | 6.9 | 0.4 | 5.9 |
| BR18 | Little Eagle Creek | 4.6 | 7.7 | 5.9 | 5.9 | 0.3 | 4.9 |
| BR19 | Otter Creek | 5.1 | 9.7 | 6.9 | 8.4 | 0.3 | 6.1 |
| BR20 | Boone River | 4.7 | 8.2 | 5.3 | 6.3 | 0.2 | 5.0 |
| BR21 | Boone River | 5.0 | 8.7 | 6.1 | 6.2 | 0.2 | 5.2 |
| BR22 | West Otter Creek | 5.6 | 9.3 | 6.0 | 9.7 | 0.6 | 6.2 |
| BR23 | Otter Creek | 6.3 | 10.0 | 7.6 | 7.0 | 0.5 | 6.3 |
| BR24 | Prairie Creek | 4.2 | 7.9 | 4.1 | 4.1 | 0.3 | 4.1 |
| BR25 | Drainage Ditch Number 117 | 5.0 | 6.2 | 3.0 | 1.1 | 0.2 | 3.1 |
| BR26 | Prairie Creek | 3.5 | 5.8 | 2.5 | 1.5 | 0.2 | 2.7 |
| BR27 | Boone River | 3.7 | 7.2 | 4.4 | 2.2 | 0.4 | 3.6 |
| BR28 | Boone River | 5.6 | 9.4 | 6.5 | 4.4 | 0.3 | 5.2 |
| BR29 | Middle Branch Boone River | 4.6 | 10.1 | 5.5 | 4.5 | 0.5 | 5.0 |
| BR30 | East Branch Boone River | 5.6 | 9.4 | 5.3 | 6.4 | 0.2 | 5.4 |

Mainstem

No Data

All concentrations in mg/L, which is the same as ppm

+ Site data provided by Iowa Water Quality Information System (<https://iwqis.iowawis.org/>)

